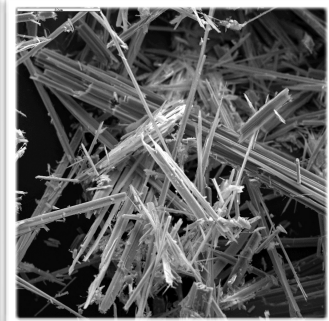
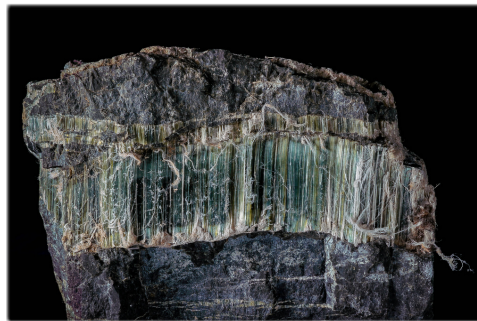
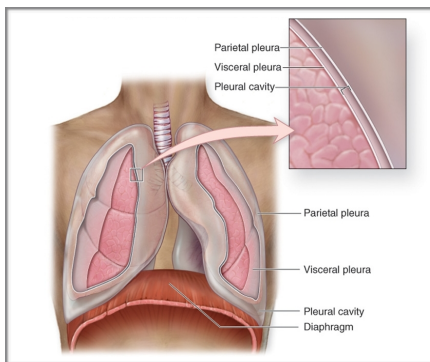


HEUBECK LAW, P.C.

Knowledge | Experience | Results



Mesothelial Cells

Certain organs or areas of the body - the lungs, the heart, and the abdomen - are encased in a thin membrane made of mesothelial cells. The membrane that exists around the lungs is known as the *pleura*, around the heart it's the *pericardium*, and around the abdomen it is the *peritoneum*.

Mesothelioma

Exposure to asbestos can result in a cancerous tumor developing in the mesothelial cells. The tumor takes several decades to develop and is usually well-advanced by the time it is discovered. Pleural mesothelioma is the most common variety, accounting for about 75% of the mesothelioma cases.

Asbestos

Asbestos is the name given to a group of six unusual minerals that appear as bands or veins in certain types of rock. The asbestos minerals exist as small and thin fibrous crystals. Larger fibers were once woven to form fireproof cloth and used to make gloves, theater curtains, welding blankets, and ironing board covers. Smaller fibers were used as a binder to strengthen insulation, plaster, fireproofing, cement pipe, floor tile, certain plastics, and brake linings. Prior to 1972, thousands of commercial and industrial products contained asbestos. The asbestos fiber or "dust" used in these products is small enough to be inhaled deep into the recesses of the lungs.

Asbestos Exposure

Asbestos exposure can result from any activity that creates asbestos dust - whether it comes from handling the raw materials that form the product or mixing, cutting, sanding, drilling or grinding the finished product. Even working near an asbestos product can cause exposure, if the product produced dust.

Whose is Responsible?

Legal responsibility may rest with the companies that made, sold,

Lung Cancer

Since asbestos is a genotoxin, It can cause a cancerous tumor to develop in the lung itself. The risks of lung cancer from asbestos exposure is higher among people who also smoked cigarettes.

Asbestosis

The inhalation of asbestos over a number of years can also result in a form of lung fibrosis known as asbestosis. This disease is not a cancer, but it can significantly interfere with lung function and it is not reversible.

Knowledge of Hazards

Asbestos has been recognized as a dangerous material by the medical and scientific community for more than 100 years. The first reported lung injury from breathing asbestos dust appeared in the United Kingdom's "Annual Report of the Chief Inspector of Factories and Workshops" in 1898. Prior to the formation of the EPA and OSHA in the early 1970's, there were no regulations prohibiting its use.

installed, removed or owned the asbestos products that produced injury. Identifying the products and determining which exposures were the most likely to cause injury requires a level of knowledge and experience that few lawyers can claim.

Knowledge and Experience

Our lawyers have represented asbestos clients for over 30 years. We have experience in all the ways in which workers were exposed to asbestos, from shipyards to steel mills, and a wide variety of unusual occupations, such as:



The plaintiff owned a company that made custom aluminum castings and used a plaster that contained talc. Asbestos was not a listed ingredient in the plaster, but the talc was shown to be contaminated with asbestos.

The plaintiff worked in a hospital laundry with industrial ironing machines that used asbestos covers. She was exposed every day to the wear dust.



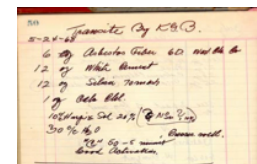
The client's father worked at an oil refinery and would wear his work clothes home, often covered with asbestos dust, exposing his son.

The plaintiff worked for only two summers at a company that manufactured an asbestos-containing coating used on underground pipes.



The client worked one summer for a paper mill. He was exposed to asbestos from the conveyor belts (known as dryer felts) used on the paper making machine. Air hoses were used to clean the asbestos felts and asbestos dust was released into his workplace.

The plaintiff was exposed as a child at his grandfather's laboratory, where asbestos was used to formulate various tiles and other products.



Understanding Asbestos

Heubeck Law, P.C.

Visit us at www.HeubeckLaw.com

If you need assistance with an asbestos exposure case, contact us. Our knowledge and experience can add significant value

to the case.